

# BLUEPRINT Careers

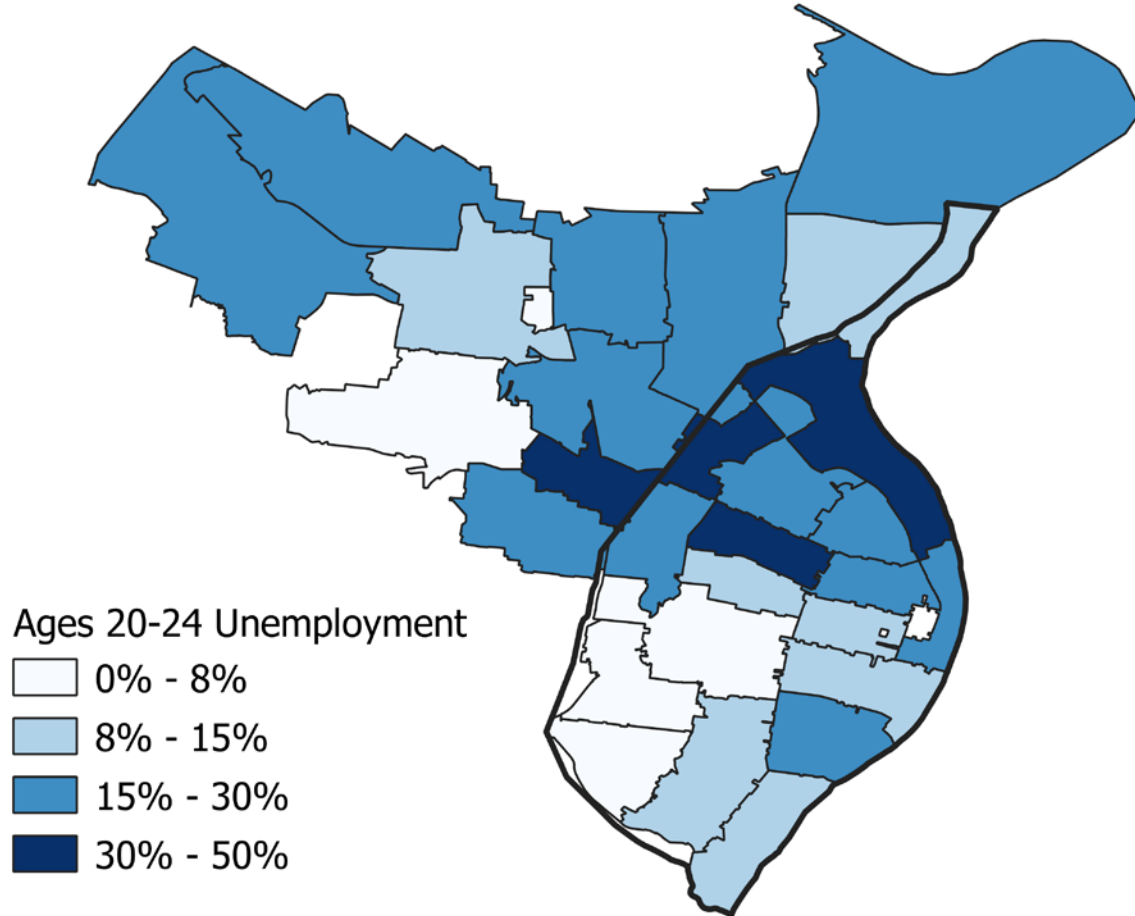


# Post-Secondary Education Pathways

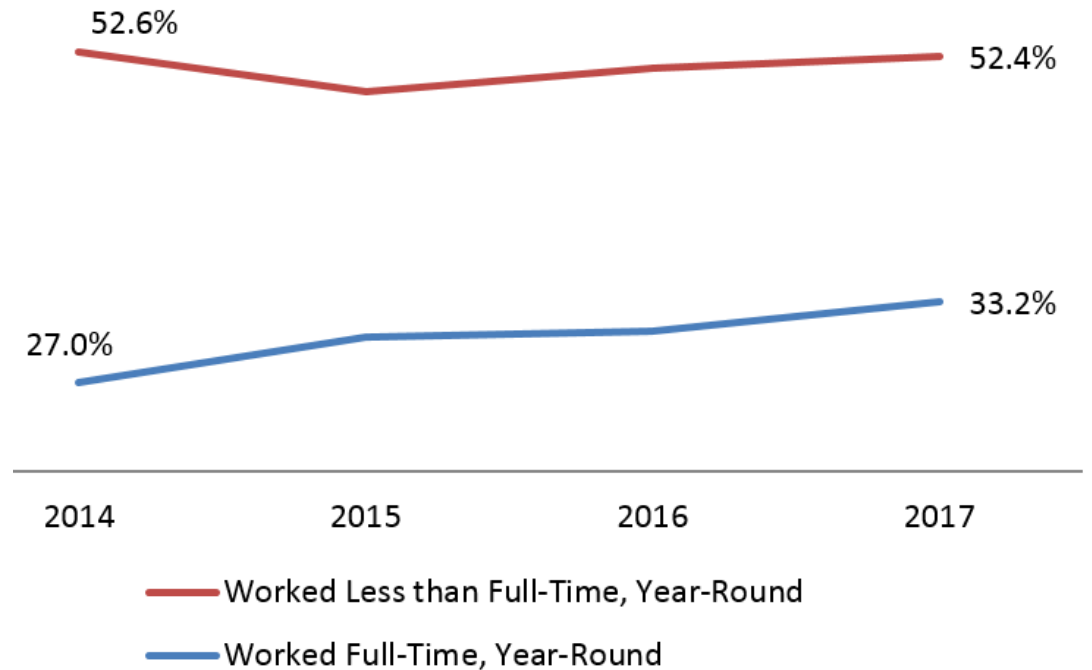
School District	Entering a 4yr. College/University (2018)	Entering a 2yr. College/University (2018)	Entering a Technical Institution (2018)	Entering Employment (2018)
ST. LOUIS CITY	34.7%	24.8%	1.9%	27.6%
FERGUSON/ FLORISSANT	30.5%	32.8%	3.2%	23.3%
HAZELWOOD	33.6%	31.9%	1.5%	15%
JENNINGS	30.4%	15.5%	1.2%	44.7%
NORMANDY	21.4%	16.8%	0.80%	57.3%
RIVERVIEW	13%	17.6%	2.8%	64.2%
UNIVERSITY CITY	37.9%	28%	3.3%	20.9%

**Data Source:** MO Department of Elementary and Secondary Education

# Population Level Data



## 20-24 Yr Old Employment Status



Source: American Community Survey

- Partnership with the Clark Fox Family Foundation
- Expansion of existing Blueprint4Summer and Blueprint4Summer College Prep platforms
- **Tool**
  - Innovative web platform connects young people to training programs that lead to middle-skills jobs
  - Free, easy to use



# Industry Spotlights

Unique pages highlighting detailed information for each high-growth industry including:

- Industry summary
- Video feature
- Entry-level occupation details
- RYEC Endorsed training program highlights
- Top regional employers
- Sample career ladder
- Current high school student opportunities

## INDUSTRY SPOTLIGHTS

Click on the icons below to learn more about an industry sector, and discover if a career in that sector is right for you!



Advanced Manufacturing



Automotive



Bioscience



Construction



Culinary



Energy Solutions



Healthcare



Hospitality



Information Technology



Transportation & Logistics

# RYEC Endorsement

One of a kind feature to identify key criteria we believe indicate training programs that are high quality and most likely to offer supported paths to obtaining industry recognized credentials:

- Program completion rate of 60% or greater
- Job placement rate of 70% or greater
- Affordable or provides financial aid



**Solar Photovoltaic Installer** (St. Louis Community College- Career Programs) | \$966.00 | ♥

★ RYEC ENDORSED

Duration : 1 – 3 Months

Solar panel installer is the fastest-growing job in eight U.S. states, including Missouri. The average starting salaries in the St. Louis region is \$35,000. Participants in STLCC's Accelerated Solar PV Installation Tech training will gain fundamental knowledge to compete for solar entry-level installer positions. Upon successful completion of this 8-week course, you will learn to calculate power potential and design Solar PV Systems for homes, install Solar PV systems (solar panels and inverters) on a mock roof, understand how Solar PV systems operate, be prepared to take the Solar PV Associate Exam through the National American Board of Certified Energy Professionals (NABCEP).

🔍
⚙️
💰





A free career **exploration** guide for **training** programs that can **launch** you into a successful, high-demand **skilled** career.

Powerful search function to navigate vast array of opportunities by:

- Industry
- Training Duration
- Distance from Home

The screenshot shows the 'CAREER PROGRAM SEARCH' page. The search bar contains the text 'Welding, coding, auto mechanic, nursing assistant, etc. Use double quotes to search for a specific phrase'. Below the search bar, there are several filter sections: 'CATEGORIES' with icons for Advanced Manufacturing, Automotive, Bioscience, Construction, Culinary, Energy Solutions, Healthcare, Hospitality, Information Technology, and Transportation & Logistics; 'DURATION' with radio buttons for 1-3 Months, 3-6 Months, 6-12 Months, More Than 1 Year, and All; and 'COST' with radio buttons for Free and Financial Aid Available. At the bottom, there is a 'PROGRAMS CLOSEST TO' field with the value '63110'. The 'Search Sessions' button is highlighted with a yellow box, and several yellow stars are placed over the 'Advanced Manufacturing' category, the '1-3 Months' duration option, the '63110' field, and the 'Search Sessions' button.



Q SESSION RESULTS

List Map Print Send Save

Edit Search Criteria

Programs in category "advancedManufacturing" within 20 miles of 63110 lasting 1 - 3 Months

Showing all 3 matches Closest to... 63110 Change



**Boeing Pre-Employment Training Program: Composites (St. Louis Community College- Career Programs)** | It's free! | 10.42 miles away

**RYEC ENDORSED**

Duration : 1 – 3 Months

Build something amazing. Since 2007, Boeing and STLCC's innovative workforce development partnership has trained and positioned job candidates for successful careers at Boeing. STLCC offers two training pathways for assembly mechanic jobs at Boeing. The training is free and ideal for those who are mechanically inclined. You will develop the important technical skills and the soft skills, like teamwork and communication, that Boeing seeks. As a graduate you will be guaranteed an interview with Boeing. This specific program prepares you to interview for the Composite Fabrication and Assembly with Boeing. In the 10+ years STLCC has been partnering with Boeing to provide this pre-employment program, over 600 graduates have been employed with Boeing.



**Manufacturing Job Skills Training (St. Louis Community College- Career Programs)** | \$1,495.00 | 10.42 miles away

Duration : 1 – 3 Months

This program prepares you for entry level employment and teaches skills to help you more rapidly advance your career in the manufacturing industry. Using meaningful, relatable experiences, your knowledge will be developed through classroom learning, industry tours and hands-on projects. This program will help you to develop skills and learn success strategies for WorkKeys testing, learn how to exhibit qualities, attitudes and ambitions that employers seek, and build a valuable base of manufacturing know-how.



**Boeing Pre-Employment Training Program: Sheet Metal Assembler & Riveter (St. Louis Community College- Career Programs)** | It's free! | 10.42 miles away

**RYEC ENDORSED**

Duration : 1 – 3 Months

Build something amazing. Since 2007, Boeing and STLCC's innovative workforce development partnership has trained and positioned job candidates for successful careers at Boeing. STLCC offers two training pathways for assembly mechanic jobs at Boeing. The training is free and ideal for those who are mechanically inclined. You will develop the important technical skills and the soft skills, like teamwork and communication, that Boeing seeks. As a graduate you will be guaranteed an interview with Boeing. This specific program prepares you to interview for the Sheet Metal Assembler Riveter position with Boeing. In the 10+ years STLCC has been partnering with Boeing to provide this pre-employment program, over 600 graduates have been employed with Boeing.



## Search Results



# Program Page

- Duration
- Cost
- Job Placement Role
- Projected Starting Salary
- Application Process
- WorkKeys Requirements (if applicable)

## BOEING PRE-EMPLOYMENT TRAINING PROGRAM: COMPOSITES



### St. Louis Community College- Career Programs

Duration: 1 – 3 Months  
Cost: It's free!  
Job Placement (Role): Team Assemblers  
Job Average Starting Salary: \$35,000.00



See more Program Details

Mark as Favorite View Website Industry Spotlight

Build something amazing. Since 2007, Boeing and STLCC's innovative workforce development partnership has trained and positioned job candidates for successful careers at Boeing. STLCC offers two training pathways for assembly mechanic jobs at Boeing. The training is free and ideal for those who are mechanically inclined. You will develop the important technical skills and the soft skills, like teamwork and communication, that Boeing seeks. As a graduate you will be guaranteed an interview with Boeing. This specific program prepares you to interview for the Composite Fabrication and Assembly with Boeing. In the 10+ years STLCC has been partnering with Boeing to provide this pre-employment program, over 600 graduates have been employed with Boeing.

## APPLICATION PROCESS AND REQUIREMENTS

1. Send your résumé to [boeingtraining@stlcc.edu](mailto:boeingtraining@stlcc.edu). Please be sure to include all skills, hobbies, tools and work experiences that would reflect your mechanical aptitude on the resume.
2. Once we have received your résumé, selected applicants will be contacted by program staff and scheduled for WorkKeys assessments. Successful applicants need the following WorkKeys Scores: Applied Math – 4; Graphic Literacy – 4; Workplace Documents – 5
3. All applicants that pass the initial WorkKeys assessment will be scheduled for the Layout Measurement

Assessment. This is a pass/fail assessment of your ability to follow-directions, interpret measurements and measure accurately. If you do not pass the layout assessment, you will not be eligible for either training option.

4. Once you have met all the program screening requirements, you be placed into an applicant pool for an upcoming class.

## ST. LOUIS COMMUNITY COLLEGE- CAREER PROGRAMS

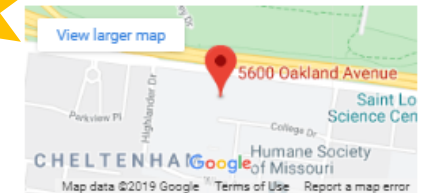
(314) 644-9100

Mark as Favorite View Website



Established in 1962, St. Louis Community College is the largest higher educational institution in the region and the second largest in Missouri. STLCC has served more than 1.2 million students; at least one person in more than one-half of the households in the St. Louis area has attended the College. Today, STLCC consistently ranks among the top associate degree-producing institutions in the United States. As the region's largest educational resource for college transfers, career development and workforce training, we're leading the way in student success, innovation and community transformation.

## Location



5600 Oakland Ave.  
St. Louis, MO 63110

# Development of Regional Career Ladders

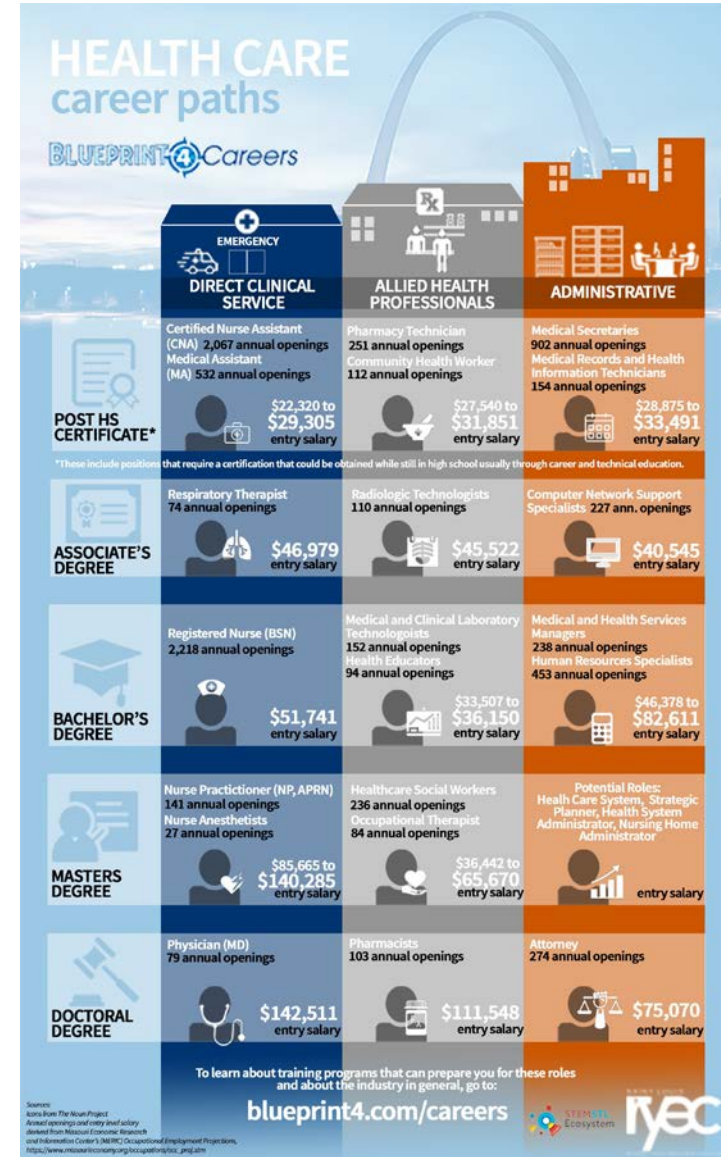
Developing regional career pathways with largest openings and strongest viable paths to upward mobility and career advancement.

## 2019 Scope of Work

- Development of IT and Healthcare in partnership with STEMSTL

## 2020 Scope of Work

- Complete career ladders in partnership with industry for all industries on Blueprint4Careers



# Let's Collaborate!

- Counselor, teacher, staff or youth presentations
- Website Collateral Materials
- Other engagement opportunities

## **Andi Harpring**

Community Engagement Manager

### **Nine Network**

314-512-9025

aharpring@ketc.org

## **Nataly Garzon**

Specialist, Systems Change Strategies

### **Ready by 21 St. Louis**

314-539-4276

Nataly.Garzon@stl.unitedway.org

# Thank You!

